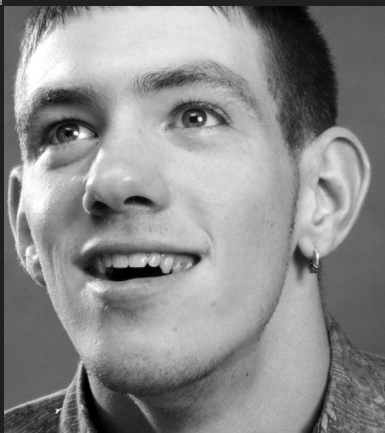


Augmentative Communication On-line Users' Group (ACOLUG)

"I think ACOLUG has become a family where people come for help, advice, and sometimes a kick in the pants. We celebrate our achievements and give comfort for our hard times like any other family would. I am very lucky to be part of this family"

Dave Chapple, ACOLUG member



The **Augmentative Communication On-Line User's Group (ACOLUG)** is an Internet Listserv which allows users of augmentative communication and their families to communicate with each other and with professionals who are interested in augmentative communication. **ACOLUG** enables people who are separated by great geographic distances to "meet" and communicate with each other in a way that is convenient, comfortable and free!

ACOLUG has a diverse membership of more than 600 people representing 50 states and 15 countries, posting an average of 250 messages each month. The membership is primarily users of augmentative communication ranging in age from 7 years old to mature adults. Family members also play a key role on **ACOLUG**.

To subscribe to **ACOLUG**, all you need is a computer with an internet connection. If you send and receive e-mail, you are ready to subscribe. You can subscribe to **ACOLUG** by visiting <http://listserv.temple.edu/archives/acolug.html>

or

1. Send an e-mail to listserv@listserv.temple.edu
2. Leave the subject line blank
3. In the message type:
subscribe acolug yourfirstname yourlastname
(*Example: subscribe acolug alice smith*)
4. Send the message
5. Use the reply function to the Command Confirmation Request. Leave the subject the same and in the body of the message, type the word "ok"
6. You are now subscribed, so introduce yourself.

ACOLUG is a project of the Institute on Disabilities at Temple University, and the Rehabilitation Engineering Research Center on Communication Enhancement (RERC).

For more information, please contact:

Institute on Disabilities
at Temple University
Tel. (215) 204-1356 voice/TTY
Fax: (215) 204-6336
www.disabilities.temple.edu



Institute on Disabilities

TEMPLE UNIVERSITY®

College of Education